

Size	Price
25 µl of serum	Contact us

Polyclonal guinea pig anti-human NTPDase3 antibodies

NTPDase 3 is also known as CD39L3, nucleoside triphosphate diphosphohydrolase-3, HB6, ENTPD3

Name: hN3-1_C(I₄,I₅,I₆); hN3-2_C(I₄,I₅)

Applications¹

	Yes	Dilution	No	Not tested
Western blot (non-reduced) [§]	+	1:1000		
Western blot (reduced)			×	
Immunocytochemistry*	+	1:500		
Flow cytometry	+	1:250		
ELISA				×
Immunoprecipitation				×

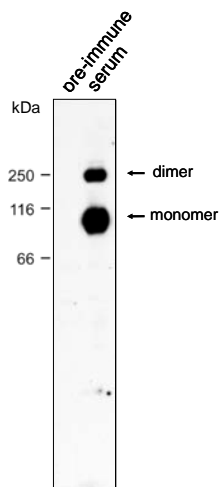
§ Thiol-reactive reagents (e.g. β-mercaptoethanol, DTT) must be avoided as they destroy the epitope recognized by the antibody.

* Cryosection and acetone fixation

Cross-reactivity

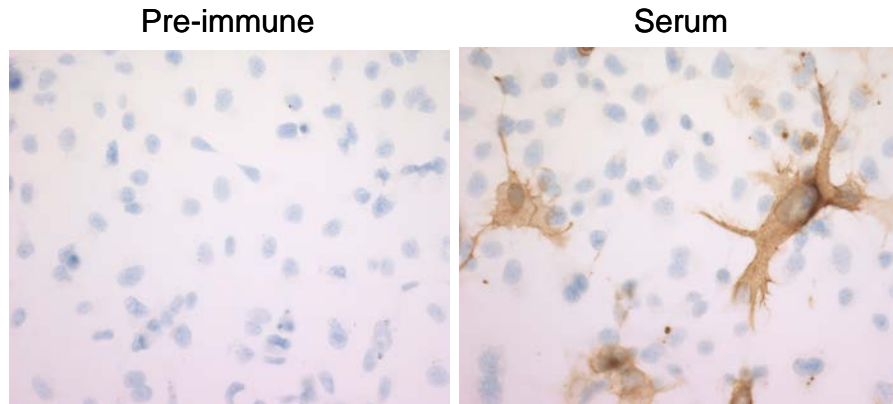
Not tested

Western Blot¹



Protein samples (6 µg) from a lysate from COS-7 cells transiently transfected with a plasmid encoding for human NTPDase3 were loaded on a NuPAGE® Novex® Bis-Tris 4-12% gel under non-reducing conditions, transferred to an Immobilon-P membrane and incubated with hN3-1_CI₄ (1:500) or preimmune serum. A specific band is detected only in the immune serum at the right molecular weight. Note that NTPDase3 is generally seen as both a monomer (75-kDa) and a dimer (150-kDa) in Western blot performed in these conditions.

Immunocytochemistry¹



Immunocytochemistry of COS-7 cells transfected with a plasmid encoding human NTPDase3 incubated with either hN3-1_c (1:500) or preimmune serum. A strong signal is observed only with the antiserum in cells expressing human NTPDase3. No signal is detected in the preimmune serum. Nuclei are stained with hematoxylin (blue).

Storage

To avoid excessive freeze-thaw cycles, a small amount can be kept at 4°C for generally up to one year. A better method consists to dilute the antibody 10 times in one part of 145 mM NaCl, 1% BSA, 10 mM Tris (pH 7.4), and one part of glycerol (for a final concentration of 50% v/v) and to keep it at -20°C (note that 50% glycerol solutions freeze at about -30°C). For long-term storage, freeze samples directly at -80°C.