

Size	Price
100 µl of serum	\$200 (CAN)

Polyclonal rabbit anti-human NTPDase1/CD39 antibodies

Name: hN1-8_L(I₄,I₅,I₆); hN1-9_L(I₄,I₅,I₆)

Applications¹

	Yes	Dilution	No	Not tested
Western blot (non-reduced) [§]	+	1:500		
Western blot (reduced)				×
Immunohistochemistry [*]	+	1:500		
Flow cytometry				×
ELISA				×
Immunoprecipitation				×

* Cryosection and acetone fixation

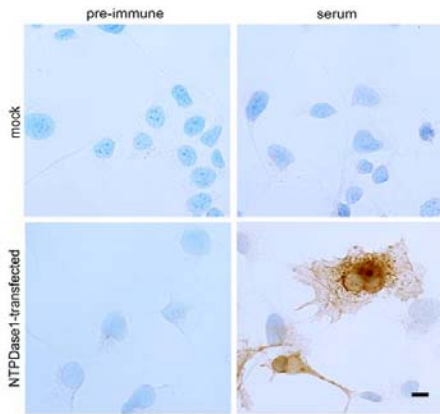
Cross-reactivity

Not tested

Western blot¹

§ These antibodies are not appropriate for Western blot as it gives a weak signal. The guinea pig anti-human NTPDase1 serum named hN1-1_C is more appropriate for Western blot.

Immuno(cyto/histo)chemistry



Immunocytochemistry of untransfected COS-7 cells (mock) or transfected with a plasmid encoding human NTPDase1 both incubated with hN1-9_LI₅ or preimmune serum. A strong signal is observed only with the antiserum in cells expressing human NTPDase1. No signal is detected in any of the control cells. Nuclei are stained with hematoxylin (blue).

Storage

To avoid excessive freeze-thaw cycles, a small amount can be kept at 4°C for generally up to one year. A better method consists to dilute the antibody 10 times in one part of 145 mM NaCl, 1% BSA, 10 mM Tris (pH 7.4), and one part of glycerol (for a final concentration of 50% v/v) and to keep it at -20°C (note that 50% glycerol solutions freeze at about -30°C). For long-term storage, freeze samples directly at -80°C.